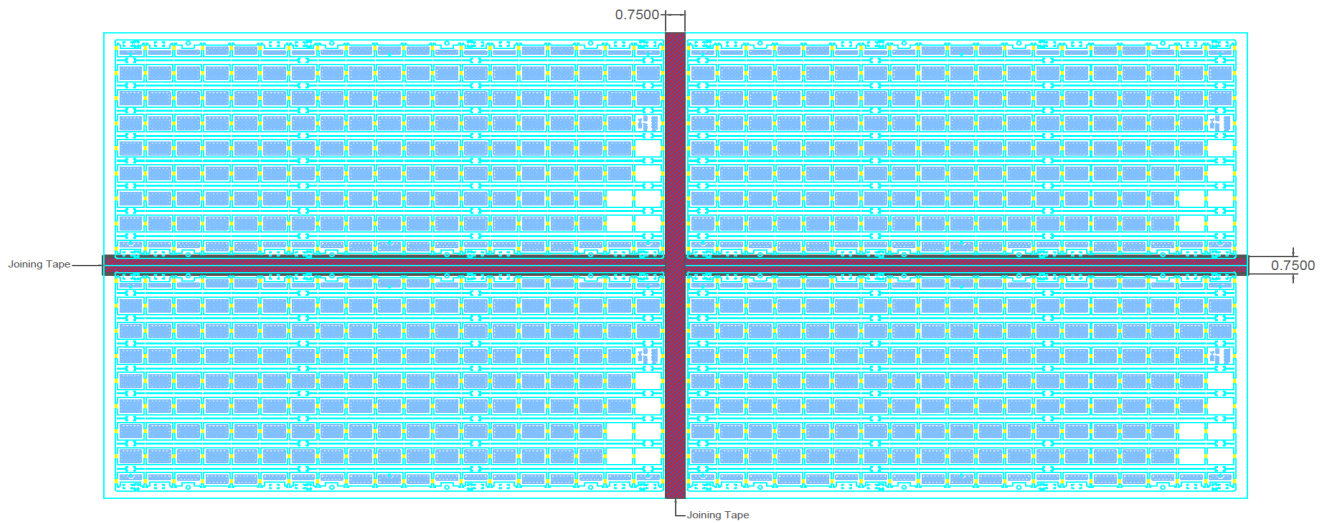


## **Tiling Instructions for Multiple LumaFilm Light Emitters (Sheets)**

LumaFilm Sheets can be joined together to make a single sheet. Heilux recommends the use of 3M 8401 splicing tape or equivalent tape applied to the back of all adjoining sheets. Ensure that the surface to which the LumaFilm Sheet is placed on during the taping process is soft to avoid damage to the LEDs



Schematic 4

## **Troubleshooting**

If a LumaFilm Light Emitter (Sheet) does not illuminate when the power is turned on:

- 1) Check to ensure all electrical connections have been made and are intact.
- 2) Check to ensure that the wires from the LumaFilm Sheet to the power supply are correctly connected by polarity.

If one section of LEDs on a LumaFilm Light Emitter (Sheet) does not illuminate when the power is turned on it is likely that the circuit to that section of LEDs is damaged. The LumaFilm Light Emitter (Sheet) should be replaced.

If a single LED on a LumaFilm Light Emitter (Sheet) does not illuminate when the power is turned on it is likely that the connection between the single LED and the circuit on that particular Light Emitter has been broken or the LED has failed. The overall light output of the system will not be affected significantly. If the LumaFilm Light Emitter is mounted such that the LED is not visible, there is no need to replace the Light Emitter (Sheet). If the LumaFilm Light Emitter is mounted such that the failed LED is visible, then a replacement Light Emitter (Sheet) may be required.

### **Contact for LumaFilm Technical Support:**

1.952.944.9859 (tel)  
techsupport@heilux.com

Heilux, LLC  
10200 Valley View Road, Ste. 100  
Eden Prairie, MN 55344  
www.heilux.com

LumaFilm is a registered trademark of Heilux, LLC  
© 2015 Heilux, LLC